

LC-210

Submittal

Style "LC-210"
Light Commercial
Slope Top Enclosure
Copper/Aluminum & Steel Ratings

Specification

ENCLOSURE:

- STYLE : LC-210
 OUTLET: Slope Louvered
 Pencil Proof
 LENGTHS: 2'0" thru 8'0" in 6" Increments
 MAT'L 18 Ga. CRS (Std)
 16 Ga. CRS (Opt'l)
 FINISH: Baked Powder (Std)
 Baked Metallic (Opt'l)

ELEMENT:

- TYPE: Cu/AL (Mechanically Expanded)
 LENGTHS: 2'0" thru 8'0" in 1" Increments.
 One End Flared (Std)
 TYPE: IPS Steel (Mechanically Expanded)
 LENGTHS: 2'0" thru 12'0" in 1" Increments.
 NPT Thread both Ends (Std)
 Beveled Ends for Field Weld (Opt'l)

BACKPLATE:

- TYPE: Partial Backplate B-610
 LENGTHS: 8'0" Only
 MATERIAL: 20 Ga. Galvannealed (Std)
 18 Ga. Galvannealed (Opt'l)
 TYPE: Full Ht. B/P (Opt'l)
 LENGTHS: 2'0" thru 8'0" in 6" Increments
 MATERIAL: 20 Ga. Galvannealed (Std)
 18 Ga. Galvannealed (Opt'l)

ACCESSORIES:

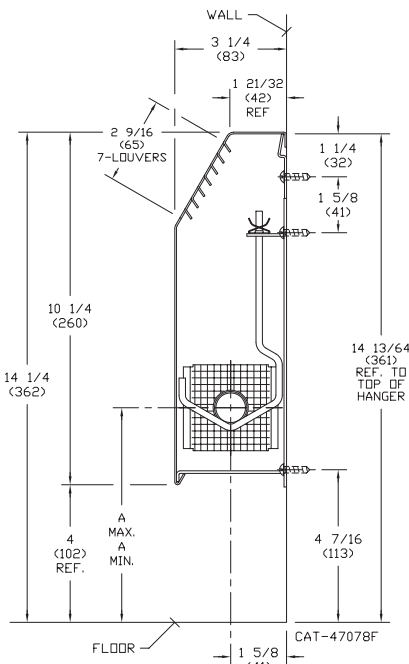
Overlapping Type

AIR SEAL: 1/8" x 3/8" Closed Cell (Opt'l)

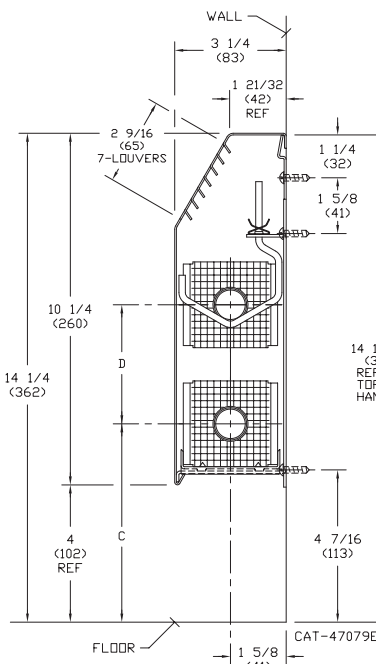
BRACKETS: 14 Ga. Galvannealed Steel
 One Piece Brkt

CAT NO.	A MIN.	A MAX.
VR02	5 15/16 (150.8)	8 7/16 (214.3)
VR03	6 1/16 (154)	8 5/8 (219.1)
VR04	6 9/16 (166.7)	8 15/16 (227)
VR05	6 9/16 (166.7)	9 1/8 (231.8)
VR06	7 1/8 (181)	8 11/16 (220.7)
VR07	7 1/8 (181)	8 11/16 (220.7)
VR08	6 11/16 (169.9)	9 1/4 (235)
VR09	7 3/16 (182.6)	8 11/16 (220.7)
VR10	7 3/16 (182.6)	8 11/16 (220.7)
VR11	6 11/16 (169.9)	9 3/16 (233.4)
VR15	7 3/16 (182.6)	8 11/16 (220.7)
VR16	7 3/16 (182.6)	8 11/16 (220.7)

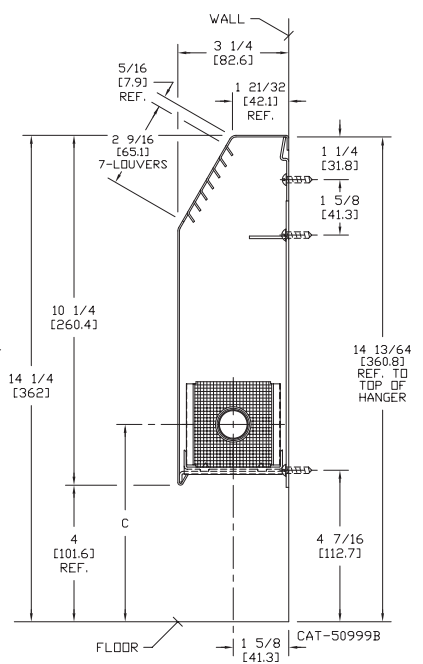
LC-210 1-TIER



LC-210 2-TIER



LC-210 1-TIER WITH SLIDE SHOE



CAT NO.	C	D
VR02	5 25/32 (147)	3 1/2 (89)
VR03	5 25/32 (147)	3 1/2 (89)
VR04	6 7/32 (156)	N/A
VR05	6 7/32 (156)	N/A
VR06	7 1/32 (176)	N/A
VR07	7 1/32 (176)	N/A
VR08	6 7/32 (156)	N/A
VR09	7 1/32 (176)	N/A
VR10	7 1/32 (176)	N/A
VR11	6 7/32 (156)	N/A
VR15	7 1/32 (176)	N/A
VR16	7 1/32 (176)	N/A

Dimensions are in inches. Dimensions in parentheses are in millimeters.



260 North Elm St., Westfield, MA 01085
 (413) 568-9571
 www.vulcanrad.com

PROJECT: _____ DATE: _____
 LOCATION: _____
 ARCHITECT: _____
 ENGINEER: _____
 CONTRACTOR: _____
 PO NUMBER: _____

STYLE Light Commercial "LC-210"

COPPER/ALUMINUM ELEMENT RATINGS
 ALL RATINGS ARE BASED ON 3 FPS VELOCITY, 65° EAT

TUBE SIZE	CATALOG DESIGNATION	FIN SIZE HEIGHT X WIDTH	FINS PER FT.	FIN THICKNESS IN INCHES	TIERS AND CENTERS IN INCHES	MTG. HEIGHT IN INCHES	STEAM 215°F FACTOR	HOT WATER (AVG.)									
								200°	190°	180°	170°	160°	150°	140°	130°	120°	
								CORRECTION FACTORS FOR AVERAGE WATER TEMPERATURES									
								1.00	0.86	0.78	0.69	0.61	0.53	0.45	.40	.33	.26
3/4"	VR02	2-1/2" x 2-3/4"	60	.010	1	14-1/4	1140	980	890	790	700	600	510	460	380	300	
					2 - 3-1/2 CL	14-1/4	1560	1340	1220	1080	950	830	700	620	510	410	
1"	VR03	2-1/2" x 2-3/4"	55	.011	1	14-1/4	1090	940	850	750	660	580	490	440	360	280	
					2 - 3-1/2 CL	14-1/4	1600	1380	1250	1100	980	850	720	640	530	420	
3/4"	VR04	3-3/4" x 2-3/4"	50	.014	1	14-1/4	1170	1010	910	810	710	620	530	470	390	300	
1"	VR05	3-3/4" x 2-3/4"	50	.011	1	14-1/4	1130	970	880	780	690	600	510	450	370	290	
1-1/4"	VR08	3-3/4" x 2-3/4"	50	.020	1	14-1/4	1150	990	900	790	700	610	520	460	380	300	
1"	VR06	5" x 2-3/4"	40	.020	1	14-1/4	1200	1030	940	830	730	640	540	480	400	310	
1"	VR07	5" x 2-3/4"	50	.020	1	14-1/4	1210	1040	940	830	740	640	540	480	400	310	
1-1/4"	VR09	5" x 2-3/4"	40	.020	1	14-1/4	1150	990	900	790	700	610	520	460	380	300	
1-1/4"	VR10	5" x 2-3/4"	50	.020	1	14-1/4	1230	1060	960	850	750	650	550	490	410	320	

STYLE Light Commercial "LC-210"

STEEL ELEMENT RATINGS
 ALL RATINGS ARE BASED ON 3 FPS VELOCITY, 65° EAT

TUBE SIZE	CATALOG DESIGNATION	FIN SIZE HEIGHT X WIDTH	FINS PER FT.	FIN THICKNESS IN INCHES	TIERS AND CENTERS IN INCHES	MTG. HEIGHT IN INCHES	STEAM 215°F FACTOR	HOT WATER (AVG.)									
								200°	190°	180°	170°	160°	150°	140°	130°	120°	
								CORRECTION FACTORS FOR AVERAGE WATER TEMPERATURES									
								1.00	0.86	0.78	0.69	0.61	0.53	0.45	.40	.33	.26
1"	VR11	3-3/4" x 2-3/4"	40	.024	1	14-1/4	910	780	710	630	560	480	410	360	300	240	
1"	VR15	5" x 2-3/4"	50	.024	1	14-1/4	1100	950	860	760	670	580	500	440	360	290	
1-1/4"	VR16	5" x 2-3/4"	50	.024	1	14-1/4	1150	990	900	790	700	610	520	460	380	300	